

**TESLA**  
L I G H T I N G



savings  
up to  
**90%**

long  
life

ecology

**TESLA LIGHTING**  
**LED CATALOG**  
NEW LED GENERATION



[www.tesla-lighting.cz](http://www.tesla-lighting.cz)  
[www.tesla-led.cz](http://www.tesla-led.cz)





**TESLA**  
L I G H T I N G

## THE BRAND'S BEGINNINGS GO BACK TO 1921. ONE OF THE MAIN LED LIGHTING MANUFACTURERS

In that year, a company by the name of Elektra entered the Czech market. In the beginning they manufactured electronics, a new and rapidly developing sector. In 1932, Philips bought Elektra and the company focused on development of radio receivers - many of our citizens who listened to "London calling" during the war were listening on radios made by this Holešovice brand.

After the war it was nationalized, the company changed its name as well as its owner, and under the TESLA brand, referring to the Serbian visionary (Nikola Tesla), it began to manufacture transistors and eventually the first television sets. In 2012 this Czech company - under its licensed name TESLA Lighting - began to sell its own modern LED sources and lamps where TESLA had originally begun, in Prague's Holešovice district.

TESLA Lighting is a Czech brand and ranks among the technical innovation leaders on the market. Thanks to great emphasis on in-house R&D, it can offer the latest LED lighting shortly after it has been tested in specialized test facilities. It also performs systematic quality control directly in its factories.

TESLA Lighting's catalog includes classical LED lighting for home and professional use, including bulbs, tubes, recessed and ceiling lamps, reflector and industrial LEDs including High Bay, lamps for street lighting, ground and floor lighting, tri-proof lighting with higher levels of protection.



# LED BULB SHOPPING GUIDE



## CLASSICAL BULBS

power consumption	luminous flux
25W	249lm
40W	470lm
60W	806lm
75W	1055lm
100W	1521lm



## TESLA LED BULBS

power consumption	luminous flux	TESLA models
<b>3W</b>	250lm	MG140327-4
<b>6W</b>	470lm	MG270427-3
<b>9W</b>	806lm	BL270930-4
<b>12W</b>	1055lm	BL271227-4
<b>15W</b>	1521lm	BL271527-42

**color light temperature**  
K = Kelvin



**luminous flux**  
lm = Lumen





# CONTENTS

## HOME LED LIGHTING



**CRYSTAL  
VINTAGE**  
PAGE 3



**CRYSTAL  
FILAMENT**  
PAGE 5



**E27 LED  
BULBS**  
PAGE 7



**E14 LED  
BULBS**  
PAGE 9



**GU10 LED SPOT  
LIGHTING**  
PAGE 11



**MR16/GU5.3 LED  
SPOT LIGHTING**  
PAGE 13



**G4 AND G9  
LED BULBS**  
PAGE 15



**GX53 AND AR111  
LED LAMPS**  
PAGE 17

## PROFESSIONAL LED LIGHTING



**T8 SMD  
LED TUBES**  
PAGE 21



**DUSTPROOF  
LUMINAIRE**  
PAGE 23



**TRI-PROOF  
LUMINAIRE**  
PAGE 25



**CEILING  
PANELS**  
PAGE 27



**LED PANELS  
DYNAMIC AND RGB**  
PAGE 29



**FLOOD  
LIGHT**  
PAGE 31



**HIGH BAY**  
PAGE 33



**EXPLOSION-PROOF  
LED LIGHT**  
PAGE 35



**STREET LIGHT  
PANORAMA**  
PAGE 37



**STREET LIGHT  
WALKER**  
PAGE 39



**PORCELAIN  
LAMP SERIES**  
PAGE 41



**BATTERIES  
AA**  
PAGE 42



**BATTERIES  
AAA**  
PAGE 43



**BATTERIES  
MONOCELLS**  
PAGE 44



**BATTERIES  
BUTTON CELLS**  
PAGE 45



**BATTERIES  
FOR HEARING AIDS**  
PAGE 46



**BATTERIES  
OTHER**  
PAGE 47





# HOME LED LIGHTING



**TESLA**  
LIGHTING





## **CRYSTAL VINTAGE LABEL**

**Design and look of a classic incandescent bulb combined with state of the art LED filament technology.**

- *Design and look of classic retro bulbs*
- *Transparent glass flask*
- *Filament LED technology with savings up to 90% and an efficiency up to 95lm/W*
- *Environmental friendly - free of mercury, lead and other hazardous substances*
- *No UV and IR radiation*

LED chips are placed on synthetic sapphire carriers. This brings the look and light similar to incandescent bulb equipped with tungsten filament. A fully-fledged replacement for any application.



# CRYSTAL VINTAGE LABEL

NEW LED FILAMENT TECHNOLOGY



ONLINE INFO



**TESLA**  
LIGHTING

SAVINGS  
UP TO

**90%**

ENERGY  
EFFICIENCY  
CLASS

**A+**



**A**



**B**



**C**



**D**



**E**

	CATALOGUE NUMBER	EAN	SOCKET	POWER	LUMINOUS FLUX	REPLACEMENT FOR	BEAM ANGLE	COLOR TEMPERATURE	DIMMABLE	LIFESPAN	Ø DIAMETER	HEIGHT
<b>A</b>	LB270424-3G	8596238000902	E27	<b>4W</b>	380lm	34W	360°	2400K	NO	15000h	28mm	204mm
<b>B</b>	GL270424-2G	8596238000865	E27	<b>4W</b>	380lm	34W	360°	2400K	NO	15000h	80mm	120mm
<b>C</b>	CB270424-3G	8596238000872	E27	<b>4W</b>	380lm	34W	360°	2400K	NO	15000h	64mm	145mm
<b>D</b>	GL270424-3G	8596238000896	E27	<b>4W</b>	380lm	34W	360°	2400K	NO	15000h	95mm	138mm
<b>E</b>	GL270424-4G	8596238000889	E27	<b>4W</b>	380lm	34W	360°	2400K	NO	15000h	125mm	173mm

C O R P

VOLTAGE **230V**

FREQUENCY **50Hz**

OPERATING TEMPERATURE **-20°-+40°C**

CRI/Ra **≥80**

IP RATING **IP20**



## CRYSTAL RETRO FILAMENT

**Design and look of a classic incandescent bulb combined with state of the art LED filament technology.**

- *Design and look of incandescent bulb*
- *Transparent glass flask*
- *Filament LED technology with efficiency up to 110lm/W*
- *No UV and IR radiation*

LED chips are placed on synthetic sapphire carriers. This brings the look and light similar to incandescent bulb equipped with tungsten filament. A fully-fledged replacement for any application. High efficiency brings savings up to 90%.

# CRYSTAL RETRO FILAMENT

## NEW LED FILAMENT TECHNOLOGY



ONLINE INFO



SAVINGS  
UP TO

**90%**

ENERGY  
EFFICIENCY  
CLASS

**A+**



	CATALOGUE NUMBER	EAN	SOCKET	POWER	LUMINOUS FLUX	REPLACEMENT FOR	BEAM ANGLE	COLOR TEMPERATURE	DIMMABLE	LIFESPAN	Ø DIAMETER	HEIGHT
<b>A</b>	BL270427-2	9009789004859	E27	<b>4W</b>	470lm	40W	360°	2700K	NO	15000h	60mm	135mm
<b>C</b>	MG270427-3	8596238000056	E27	<b>4W</b>	470lm	40W	360°	2700K	NO	10000h	45mm	76mm
<b>A</b>	BL276527-3	9009789005245	E27	<b>6,5W</b>	835lm	62W	360°	2700K	NO	25000h	60mm	135mm
<b>B</b>	BL270827-3	8596238000834	E27	<b>8W</b>	1055lm	75W	360°	2700K	NO	15000h	60mm	110mm
<b>B</b>	BL270827-3D	8596238000841	E27	<b>8W</b>	1055lm	75W	360°	2700K	<b>YES</b>	15000h	60mm	110mm
<b>F</b>	GL270827-3	8596238000858	E27	<b>8W</b>	1055lm	75W	360°	2700K	NO	15000h	95mm	138mm
<b>B</b>	BL271127-3	8596238000827	E27	<b>11W</b>	1521lm	100W	360°	2700K	NO	15000h	60mm	110mm
<b>D</b>	CL142527-3	8596238000919	E14	<b>2,5W</b>	250lm	25W	360°	2700K	NO	15000h	35mm	100mm
<b>D</b>	CL140427-1	9009789006174	E14	<b>4W</b>	470lm	40W	360°	2700K	NO	15000h	35mm	93mm
<b>E</b>	MG140427-3	8596238000049	E14	<b>4W</b>	470lm	40W	360°	2700K	NO	10000h	45mm	78mm

C O R P

VOLTAGE **230V**

FREQUENCY **50Hz**

OPERATING TEMPERATURE **-20°-+40°C**

CRI/Ra **≥80**

IP RATING **IP20**





## E27 LED BULBS

**100% LED replacement for classic incandescent tungsten light bulbs with equal power and size.**

- *Optimal heat dissipation*
- *Lifespan up to 30 000hrs. (L70)*
- *Operating temperature: -20°C - +40°C*

Advanced LED technology offers top light performance and cooling. Long lifespan and energy savings up to 85%.

# E27 LED BULBS

UNIQUE PRICE AND PERFORMANCE RATIO



ONLINE INFO



**TESLA**  
LIGHTING

SAVINGS  
UP TO

**85%**

ENERGY  
EFFICIENCY  
CLASS

**A+**



**A**



**B**



**C**



**D**

	CATALOGUE NUMBER	EAN	SOCKET	POWER	LUMINOUS FLUX	REPLACEMENT FOR	BEAM ANGLE	COLOR TEMPERATURE	DIMMABLE	LIFESPAN	Ø DIAMETER	HEIGHT
<b>C</b>	MG270430-1	9009789004521	E27	<b>4W</b>	320lm	30W	160°	3000K	NO	25000h	45mm	78mm
<b>A</b>	BL270530-7	8596238001824	E27	<b>5W</b>	470lm	40W	220°	3000K	NO	25000h	60mm	108mm
<b>A</b>	BL270540-7	8596238001831	E27	<b>5W</b>	470lm	40W	220°	4000K	NO	25000h	60mm	108mm
<b>D</b>	R6270730-5	9009789005900	E27	<b>7W</b>	560lm	-	180°	3000K	NO	30000h	63mm	96mm
<b>A</b>	BL270730-7	9009789007140	E27	<b>7W</b>	640lm	48W	220°	3000K	NO	25000h	60mm	112mm
<b>A</b>	BL270927-5D	9009789005375	E27	<b>9W</b>	806lm	60W	200°	2700K	<b>YES</b>	30000h	60mm	116mm
<b>A</b>	BL270930-4	9009789002800	E27	<b>9W</b>	806lm	60W	220°	3000K	NO	25000h	60mm	112mm
<b>A</b>	BL270940-4	9009789005221	E27	<b>9W</b>	806lm	60W	220°	4000K	NO	25000h	60mm	108mm
<b>A</b>	BL271030-2	9009789006662	E27	<b>10W</b>	806lm	60W	240°	3000K	NO	20000h	60mm	112mm
<b>A</b>	BL271130-2	8596238000452	E27	<b>11W</b>	1055lm	75W	240°	3000K	NO	25000h	60mm	112mm
<b>A</b>	BL271140-7	8596238001794	E27	<b>11W</b>	1055lm	75W	220°	4000K	NO	25000h	60mm	112mm
<b>A</b>	BL271230-2	8596238000148	E27	<b>12W</b>	1055lm	75W	240°	3000K	NO	15000h	60mm	115mm
<b>A</b>	BL271430-7	8596238001817	E27	<b>14W</b>	1521lm	100W	220°	3000K	NO	25000h	60mm	118mm
<b>A</b>	BL271440-7	8596238001800	E27	<b>14W</b>	1521lm	100W	220°	4000K	NO	25000h	60mm	118mm
<b>A</b>	BL271530-2	8596238000155	E27	<b>15W</b>	1521lm	100W	240°	3000K	NO	20000h	60mm	116mm
<b>B</b>	GL271530-5	9009789006921	E27	<b>15W</b>	1450lm	96W	300°	3000K	NO	30000h	120mm	160mm

C O R P

VOLTAGE **230V**

FREQUENCY **50Hz**

OPERATING TEMPERATURE **-20°- +40°C**

CRI/Ra **≥80**

IP RATING **IP20**



## **E14 LED CANDLE BULBS**

**100% LED replacement for classic incandescent tungsten light bulbs with equal power and size.**

- Voltage 230V
- Operating temperature -20° - +40°C
- Quality design
- Optimal heat dissipation
- Lifespan up to 25 000hrs. (L70)
- Environmentally friendly - no mercury or other hazardous substances

Advanced LED technology offers top light performance and cooling. Long lifespan and energy savings of up to 85%.



# E14 LED BULBS

LIGHT FOR SPECTACULAR INTERIORS



ONLINE INFO



**TESLA**  
LIGHTING

SAVINGS  
UP TO

**85%**

ENERGY  
EFFICIENCY  
CLASS

**A+**



**A**



**B**



**C**

	CATALOGUE NUMBER	EAN	SOCKET	POWER	LUMINOUS FLUX	REPLACEMENT FOR	BEAM ANGLE	COLOR TEMPERATURE	DIMMABLE	LIFESPAN	Ø DIAMETER	HEIGHT
<b>A</b>	MG140330-1	9009789004422	E14	<b>3W</b>	250lm	25W	180°	3000K	NO	25000h	46mm	89mm
<b>B</b>	CL140530-7	9009789007157	E14	<b>5W</b>	400lm	35W	220°	3000K	NO	25000h	37mm	98mm
<b>C</b>	R5140530-2	8596238000469	E14	<b>5W</b>	410lm	-	120°	3000K	NO	25000h	50mm	87mm
<b>B</b>	CL140630-7	8596238001770	E14	<b>6W</b>	470lm	40W	170°	3000K	NO	25000h	37mm	102mm
<b>B</b>	CL140640-7	8596238001787	E14	<b>6W</b>	470lm	40W	170°	4000K	NO	25000h	37mm	102mm

C O R P

VOLTAGE **230V**

OPERATING TEMPERATURE **-20°- +40°C**

CRI/Ra **≥80**

IP RATING **IP20**



## GU10 LED SPOT LIGHTING

**LED replacement for traditional halogen bulbs is applicable as recessed ceiling lighting, as well as precise spot lighting.**

- *High quality LED chips and optimal heat dissipation*
- *Lifespan up to 25 000hrs. (L70)*
- *True color rendering*
- *36° to 100° beam angle*
- *Environmentally friendly – no mercury or other hazardous substances*

While maintaining a design element LED technology saves up to 90% of energy and offers a wider range of beam angles. Good performance and heat dissipation ensures a lifetime up to 25 000 hours.

# GU10 LED SPOT LIGHTING

## RECESSED AND SPOT LIGHTING



ONLINE INFO



SAVINGS  
UP TO

**90%**

ENERGY  
EFFICIENCY  
CLASS

**A+**



A



B

	CATALOGUE NUMBER	EAN	SOCKET	POWER CONSUMPTION	LUMINOUS FLUX	REPLACEMENT FOR	BEAM ANGLE	COLOR TEMPERATURE	DIMMABLE	LIFESPAN	Ø DIAMETER	HEIGHT
A	GU103530-5	9009789005863	GU10	<b>3,5W</b>	240lm	-	100°	3000K	NO	25000h	50mm	55mm
A	GU103540-5	9009789005870	GU10	<b>3W</b>	230lm	-	100°	4000K	NO	25000h	50mm	55mm
A	GU100530-5	8596238000087	GU10	<b>5W</b>	410lm	-	100°	3000K	NO	25000h	50mm	55mm
A	GU100540-5	9009789006303	GU10	<b>5W</b>	410lm	-	100°	4000K	NO	25000h	50mm	55mm
A	GU100530-5D	9009789005887	GU10	<b>5W</b>	400lm	-	100°	3000K	<b>YES</b>	25000h	50mm	55mm
B	GU100730-2	9009789003876	GU10	<b>7W</b>	450lm	-	36°	3000K	NO	25000h	52mm	65mm
A	GU100730-4	9009789006679	GU10	<b>7W</b>	560lm	-	100°	3000K	NO	25000h	50mm	55mm
A	GU100740-2	8596238000483	GU10	<b>7W</b>	560lm	-	100°	4000K	NO	25000h	50mm	55mm
A	GU100730-6D	8596238000759	GU10	<b>7W</b>	560lm	-	100°	3000K	<b>YES</b>	25000h	50mm	56mm

C O R P

VOLTAGE **230V**

OPERATING TEMPERATURE **-20°- +40°C**

CRI/Ra **≥80**

IP RATING **IP20**





## MR16/GU5.3 LED SPOT LIGHTING

**LED replacement for traditional 12V halogen spot lights that are popular in different applications in both domestic and commercial interiors .**

- High quality LED chips and optimal heat dissipation
- Lifespan up to 25 000hrs. (L70)
- True color rendering
- 38° to 100° beam angle
- Environmentally friendly - no mercury or other hazardous substances

While maintaining a design element LED technology saves up to 80% of energy and offers a wider range of beam angles. Good performance and heat dissipation ensures a lifetime up to 25 000 hours.

# MR16/GU5.3 LED SPOT LIGHTING

RECESSED AND SPOT LIGHTING



ONLINE INFO



**TESLA**  
LIGHTING

SAVINGS  
UP TO

**80%**

ENERGY  
EFFICIENCY  
CLASS

**A+**



**A**

CATALOGUE NUMBER	EAN	SOCKET	POWER CONSUMPTION	LUMINOUS FLUX	VOLTAGE	BEAM ANGLE	COLOR TEMPERATURE	DIMMABLE	LIFESPAN	Ø DIAMETER	HEIGHT
<b>A</b> MR160430-5	9009789005467	GU5,3	<b>4W</b>	320lm	12V	38°	3000K	NO	25000h	50mm	53mm
<b>A</b> MR163530-4	9009789006259	GU5,3	<b>3,5W</b>	230lm	12V	100°	3000K	NO	25000h	50mm	53mm
<b>A</b> MR163540-5	9009789005856	GU5,3	<b>3,5W</b>	240lm	12V	100°	4000K	NO	25000h	50mm	53mm
<b>A</b> MR160630-5	8596238000094	GU5,3	<b>6W</b>	470lm	12V	100°	3000K	NO	25000h	50mm	53mm
<b>A</b> MR160640-5	8596238000100	GU5,3	<b>6W</b>	470lm	12V	100°	4000K	NO	25000h	50mm	53mm

C O R P

VOLTAGE **12V**

OPERATING TEMPERATURE **-20°- +40°C**

CRI/Ra **≥80**

IP RATING **IP20**



## G4 AND G9 LED BULBS

### 100% replacement of conventional G4 and G9 halogen bulbs.

- Securely embedded in clear silicone
- Low surface temperature
- Light emission equivalent to incandescent bulb
- Environmentally friendly - no mercury or other hazardous substances
- No UV and IR radiation

Energy savings up to 85%. The entire bulb including LED chips is embedded in clear silicone which ensures that the light can spread to all directions.



# G4 AND G9 LED BULBS

## DESIGN LAMPS



ONLINE INFO



**TESLA**  
LIGHTING

SAVINGS  
UP TO

**85%**

ENERGY  
EFFICIENCY  
CLASS

**A+**



**A**

**B**

**C**

**D**

	CATALOGUE NUMBER	EAN	SOCKET	POWER CONSUMPTION	LUMINOUS FLUX	VOLTAGE	BEAM ANGLE	COLOR TEMPERATURE	DIMMABLE	LIFESPAN	Ø DIAMETER	HEIGHT
<b>A</b>	G4000230-PACK2	8596238000032	G4	<b>2W</b>	200lm	12V	360°	3000K	NO	15000h	11mm	37mm
<b>B</b>	G4000240-PACK2	8596238000742	G4	<b>2W</b>	200lm	12V	360°	4000K	NO	15000h	11mm	37mm
<b>C</b>	G9000330-PACK2	8596238000018	G9	<b>3W</b>	300lm	230V	360°	3000K	NO	15000h	17mm	49mm
<b>D</b>	G9000340-PACK2	8596238000025	G9	<b>3W</b>	300lm	230V	360°	4000K	NO	15000h	17mm	49mm

C O R P

VOLTAGE **12V / 230V**

OPERATING TEMPERATURE **-20°- +40°C**

CRI/Ra **≥80**

IP RATING **IP20**



## **GX53 AND AR111 LED LAMPS**



**Very low surface temperature and pleasant light while saving energy up to 85%.**

- *Made of high-quality thermoplastic*
- *Glare-free light scattering*
- *Non-dimmable*
- *Lifespan up to 35 000h (L70)*
- *Environmentally friendly - no mercury or other hazardous substances*
- *No UV and IR radiation*

LED replacement for conventional lamps with socket GX53 and G53 suitable for modern design lighting in domestic and commercial interiors.

# GX53 AND AR111 LED LAMPS

SPACE SAVING SOLUTION



ONLINE INFO



**TESLA**  
LIGHTING

SAVINGS  
UP TO

**85%**

ENERGY  
EFFICIENCY  
CLASS

**A+**



A



B

	CATALOGUE NUMBER	EAN	SOCKET	POWER CONSUMPTION	LUMINOUS FLUX	REPLACEMENT FOR	BEAM ANGLE	COLOR TEMPERATURE	DIMMABLE	LIFESPAN	Ø DIAMETER	HEIGHT
A	AR111427-1*	9009789005481	G53	<b>14W</b>	700lm	55W	25°	2700K	NO	35000h	111mm	67mm
B	GX530630-1	9009789004873	GX53	<b>6W</b>	480lm	40W	180°	3000K	NO	30000h	75mm	24mm
B	GX530640-1	9009789006341	GX53	<b>6W</b>	480lm	40W	180°	4000K	NO	30000h	75mm	24mm

\*] G53 12V

C O R P

VOLTAGE **230V**

OPERATING TEMPERATURE **-20°- +40°C**

CRI/Ra **≥80**

IP RATING **IP20**







# PROFESSIONAL LED LIGHTING



**TESLA**  
LIGHTING





## T8 SMD LED TUBES

### **LED T8 tube brings savings of electricity up to 50%.**

- *Lightweight durable design*
- *High quality LED chips*
- *Optimal heat dissipation*
- *Non-dimmable*
- *Lifespan 50 000h (L70)*
- *LED starter included*
- *Environmentally friendly - no mercury or other hazardous substances*
- *No UV and IR radiation*

Advanced SMD LED chips tested by the LM-80 test achieve stable performance of up to 143lm/W for a lifetime of 50,000 hours. Milky cover ensures glare-free light scattering.



# T8 SMD LED TUBES

STANDARD AND HIGH EFFICIENCY TUBES  
WITH THE LATEST TECHNOLOGY



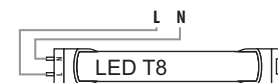
ONLINE INFO

SAVINGS  
UP TO

**50%**

ENERGY  
EFFICIENCY  
CLASS

**A+**



	CATALOGUE NUMBER	EAN	SOC-KET	POWER CONSUMPTION	LUMINOUS FLUX	BEAM ANGLE	COLOR TEMPERATURE	WEIGHT	EFFICIENCY	LIFESPAN	DIMENSIONS
<b>A</b>	T8060940-3FM	9009789005061	G13	<b>9W</b>	1020lm	120°	4000K	145g	120lm/W	50 000h	600x28mm
<b>B</b>	T8121840-3FM	9009789005078	G13	<b>18W</b>	2160lm	120°	4000K	285g	120lm/W	50 000h	1200x28mm
<b>B</b>	T8121850-3FM	9009789005085	G13	<b>18W</b>	2160lm	120°	5000K	285g	120lm/W	50 000h	1200x28mm
<b>C</b>	T8152340-3FM	9009789005092	G13	<b>23W</b>	2760lm	120°	4000K	315g	120lm/W	50 000h	1500x28mm
<b>D</b>	T8152350-3FM	9009789005306	G13	<b>23W</b>	2760lm	120°	5000K	315g	120lm/W	50 000h	1500x28mm
high performance tubes											
<b>E</b>	T8121840-3SE	9009789006464	G13	<b>18W</b>	2600lm	120°	4000K	285g	144lm/W	50 000h	1200x28mm
<b>F</b>	T8121850-3SE	9009789006471	G13	<b>18W</b>	2600lm	120°	5000K	285g	144lm/W	50 000h	1200x28mm
<b>G</b>	T8152840-3SE	9009789006501	G13	<b>28W</b>	4004lm	120°	4000K	315g	143lm/W	50 000h	1500x28mm
<b>H</b>	T8152850-3SE	9009789006518	G13	<b>28W</b>	4004lm	120°	5000K	315g	143lm/W	50 000h	1500x28mm

C O R P

VOLTAGE **230V**

OPERATING TEMPERATURE **-20°- +40°C**

CRI/Ra **≥80**

IP RATING **IP20**



## **LED TRI-PROOF LUMINAIRE**

### **High quality dust proof IP65 rated luminaire for one or two T8 LED tubes.**

- *Dust proof and water proof*
- *IP65 rated*
- *Clear PC cover*
- *Designed for LED T8 tubes*
- *Direct replacement for fluorescent luminaires*
- *Instant energy savings*

Body of the luminaire is connected with the clear cover with plastic or metal clips. This solution meets all requirements of manufacturing and storage areas, underground garages or all places where it is necessary to protect the light source against dust contamination.

# LED TRI-PROOF LUMINAIRE

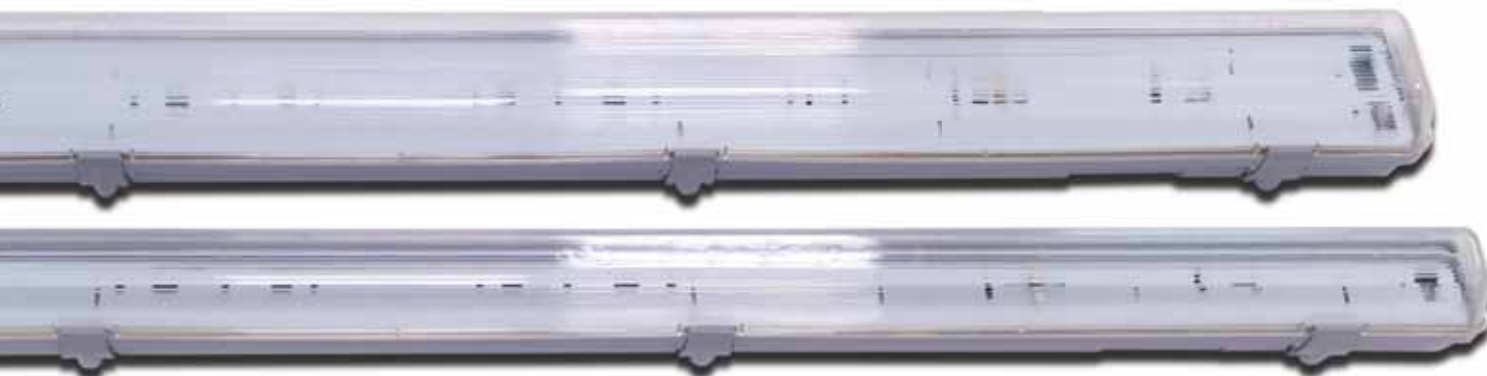
## PROFESSIONAL DUST PROOF SOLUTION



ONLINE INFO



**TESLA**  
LIGHTING



CATALOGUE NUMBER	EAN	LED LIGHT SOURCES	TUBE LENGTH	LENGTH X WIDTH X HEIGHT	WEIGHT	RECOMMENDED TESLA T8 LED TUBES
TP121800-3C	8596238001923	1xT8 18W	1200mm	1260 x 80 x 90mm	1,05 kg	T8121840-3FM, T8121850-3FM
TP123600-3C	8596238001930	2xT8 18W	1200mm	1260 x 115 x 90mm	1,45 kg	T8121840-3FM, T8121850-3FM
TP152400-2C	9009789005979	1xT8 28W	1500mm	1580 x 65 x 85mm	1,25 kg	T8152340-3FM, T8152350-3FM
TP154800-3C	8596238001947	2xT8 28W	1500mm	1560 x 115 x 90mm	1,75 kg	T8152340-3FM, T8152350-3FM

C O R P

VOLTAGE 230V

OPERATING TEMPERATURE Resistance up to 85°C

IP RATING IP65





## **LED TRI-PROOF LUMINAIRE WITH LED CHIPS**

**Fresh design for industry. LED Tri-proof luminaire is applicable in all areas where luminaire ruggedness is required.**

- *Polycarbonate frosted cover*
- *Mechanical resistance IK08*
- *Optimal heat dissipation*
- *Lifetime up to 50.000 hours (L70)*
- *Environmentally friendly - mercury-free lead and other hazardous substances*

IP65 provides the required dust and moisture resistance. The unique heat dissipation system ensures a long life of up to 50,000 hours (L70). The result is a reliable and durable TESLA luminaire.



# LED TRI-PROOF LUMINAIRE WITH LED CHIPS

SIMPLE AND EFFICIENT



ONLINE INFO



**TESLA**  
LIGHTING

ENERGY  
EFFICIENCY  
CLASS

**A**



CATALOGUE NUMBER	EAN	POWER CONSUMPTION	LUMINOUS FLUX	COLOR TEMPERATURE	BEAM ANGLE	LIFESPAN	LENGTH	WEIGHT
TP124040-6F	8596238001428	40W	5200lm	4000K	120°	50 000h	1220mm	2,17kg
TP156040-6F	8596238001435	60W	7800lm	4000K	120°	50 000h	1560mm	2,40kg

C O R P

VOLTAGE 230V

OPERATING TEMPERATURE -20°- +50°C

CRI/Ra ≥80

IP RATING IP65

**TESLA** BLUE LABEL CLASSIC EDITION  
**LED PANEL**  
size 60x60 cm  
HIGHPOWER 3600lm 40W  
WARM WHITE 3000K  
3 YEAR WARRANTY  
LIGHT UP YOUR LIFE!  
www.tesla-led.cz

## LED CEILING PANELS

**LED ceiling panel is a modern and practical replacement for fluorescent fixture in drop ceilings.**

- Ultra-slim modern design
- High performance LED chips
- Long life up to 35,000h (L70)
- 120 ° beam angle
- Environmentally friendly - no mercury or other hazardous substances

Frosted design ensures uniform light emission from the entire panel area. LED panels can be used in a wide range of applications in both modern and classic interiors, as well as home and commercial areas. Thanks to the high quality of the design and the materials used, an extremely thin construction of up to 11 mm was achieved. Their dimming can then be ensured by adding an appropriate dimmable source.



# LED CEILING PANELS

MODERN INTERIORS



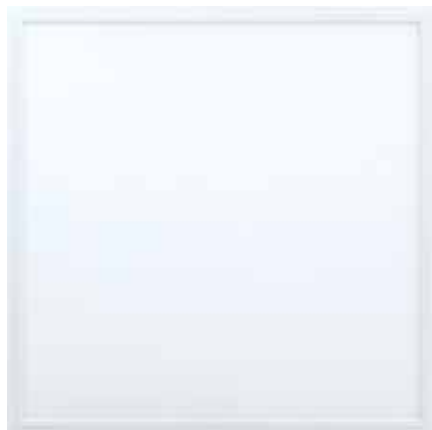
ONLINE INFO



**TESLA**  
LIGHTING

ENERGY  
EFFICIENCY  
CLASS

**A**



CATALOGUE NUMBER	EAN	POWER CONSUMPTION	LUMINOUS FLUX	COLOR TEMPERATURE	BEAM ANGLE	LIFESPAN	DIMMABLE	DIMENSIONS	WEIGHT
LP616040-4E	9009789005733	<b>60W</b>	4500lm	4000K	120°	35 000h	NO	1200x600mm	7,55kg
LP314030-9	8596238000674	<b>40W</b>	3600lm	3000K	120°	35 000h	NO	1200x300mm	3,15kg
LP314040-9	8596238000599	<b>40W</b>	4000lm	4000K	120°	35 000h	NO	1200x300mm	3,15kg
LP664030-9	8596238000643	<b>40W</b>	3600lm	3000K	120°	35 000h	NO	600x600mm	2,5kg
LP664040-9	8596238000667	<b>40W</b>	4000lm	4000K	120°	35 000h	NO	600x600mm	2,5kg
LP632040-9	8596238000636	<b>20W</b>	2000lm	4000K	120°	35 000h	NO	600x300mm	2,8kg
LP332040-9	8596238000612	<b>20W</b>	2000lm	4000K	120°	35 000h	NO	300x300mm	1,1kg
LP332030-9	8596238000605	<b>20W</b>	1800lm	3000K	120°	35 000h	NO	300x300mm	1,1kg

C O R P

VOLTAGE **230V**

OPERATING TEMPERATURE **-20°- +40°C**

CRI/Ra **≥80**

IP RATING **IP20**



4  
3  
2  
1  
1  
1



## LED PANELS DYNAMIC AND RGB

### **An indispensable complement to the distinctive interior.**

- *Smooth transition of brightness and light color*
- *Radio remote control*
- *Optimal heat dissipation*
- *Lifespan 35 000hrs (L70)*
- *Environmentally friendly: no mercury or any other hazardous substances*

Wireless controller can continuously change the light color and its brightness, easily achieving the desired lighting atmosphere. Finally, adequate lighting for each activity. Top performance and optimal heat dissipation to ensure lifespan of 35 000hrs.

# LED PANELS DYNAMIC AND RGB

SMART LABEL – MODERN INTERIOR DESIGN



ONLINE INFO



**TESLA**  
LIGHTING

ENERGY  
EFFICIENCY  
CLASS

**A**



CATALOGUE NUMBER	EAN	POWER CONSUMPTION	LUMINOUS FLUX	COLOR TEMPERATURE	BEAM ANGLE	LIFESPAN	DIMMABLE	DIMENSIONS	WEIGHT
<b>A</b> LP6640RG-9	8596238002098	<b>40W</b>	---	RGB	120°	35 000h	<b>YES</b>	595x595x10mm	4kg
<b>B</b> LP664036-9	8596238000650	<b>40W</b>	až 4200lm	3000-6000K	120°	35 000h	<b>YES</b>	595x595x10mm	2,5kg

## OPTIONAL ACCESSORIES



Suspension cables  
for LED panels



Mounting kit  
for ceiling / wall mounting



Mounting frame for LED panels  
Available in white, silver, chrome  
and for all dimensions of our panels

C O R P

VOLTAGE **230V** OPERATING TEMPERATURE **-20°- +40°C**

CRI/Ra **≥80**

IP RATING **IP20**

# LED FLOOD LIGHTS

WITH PIR SENSOR AND STAND



## LED FLOOD LIGHTS

**LED flood lights fully replace halogen headlights but at a significantly lower operating costs, a much longer lifespan and with higher resistance to frequent starts.**

- Robust design
- IP65
- High quality LED chips and optimal heat dissipation
- Lifespan 25 000h (L70)
- Environmentally friendly - no mercury or other hazardous substances

TESLA flood lights are equipped with high-performance LED chips of the highest quality.



# LED FLOOD LIGHTS

## COMPACT AND ENERGY-EFFICIENT



ONLINE INFO



**TESLA**  
LIGHTING

ENERGY  
EFFICIENCY  
CLASS

**A**



	CATALOGUE NUMBER	EAN	POWER CONSUMPTION	LUMINOUS FLUX	BEAM ANGLE	COLOR TEMPERATURE	LIFESPAN	FUNCTION	PROTECTION CLASS	WEIGHT	DIMENSIONS
<b>A</b>	FL132065-6	8596238001848	<b>20W</b>	1800lm	110°	6500K	25 000h	-	IP65	0,295kg	131x117x26mm
<b>B</b>	FL183065-6	8596238001916	<b>30W</b>	2700lm	110°	6500K	25 000h	-	IP65	0,537kg	184x165x28mm
<b>C</b>	FL235065-6	8596238001862	<b>50W</b>	4500lm	110°	6500K	25 000h	-	IP65	0,912kg	230x195x32mm
<b>D</b>	FL330165-6	8596238001879	<b>100W</b>	9000lm	110°	6500K	25 000h	-	IP65	2,025kg	327x265x42mm
<b>E</b>	FL381565-6	8596238001886	<b>150W</b>	13500lm	110°	6500K	25 000h	-	IP65	2,905kg	381x302x45mm
<b>F</b>	FL420265-6	8596238001893	<b>200W</b>	18000lm	110°	6500K	25 000h	-	IP65	3,400kg	420x320x45mm
<b>G</b>	FL132065-PIR	8596238001954	<b>20W</b>	1800lm	110°	6500K	25 000h	PIR sensor	IP44	0,410kg	131x191x26mm
<b>H</b>	FL183065-PIR	8596238001961	<b>30W</b>	2700lm	110°	6500K	25 000h	PIR sensor	IP44	0,625kg	184x232x28mm
<b>I</b>	FL235065-PIR	8596238001978	<b>50W</b>	4500lm	110°	6500K	25 000h	PIR sensor	IP44	1,030kg	230x274x32mm
<b>J</b>	FL132065-STAND	8596238001985	<b>20W</b>	1800lm	110°	6500K	25 000h	stand	IP65	1,015kg	175x160x245mm
<b>K</b>	FL183065-STAND	8596238001992	<b>30W</b>	2700lm	110°	6500K	25 000h	stand	IP65	1,319kg	215x215x325mm
<b>L</b>	FL235065-STAND	8596238002005	<b>50W</b>	4500lm	110°	6500K	25 000h	stand	IP65	1,916kg	305x210x360mm
<b>M</b>	FL183065-TRIPOD1	8596238002012	<b>30W</b>	2700lm	110°	6500K	25 000h	tripod	IP65	2,741kg	840x171x245mm
<b>N</b>	FL235065-TRIPOD1	8596238002029	<b>50W</b>	4500lm	110°	6500K	25 000h	tripod	IP65	3,555kg	840x171x245mm
<b>O</b>	FL183065-TRIPOD2	8596238002036	<b>2x30W</b>	2x2700lm	110°	6500K	25 000h	tripod	IP65	3,103kg	840x179x245mm
<b>P</b>	FL235065-TRIPOD2	8596238002043	<b>2x50W</b>	2x4500lm	110°	6500K	25 000h	tripod	IP65	4,279kg	840x179x245mm

C O R P

VOLTAGE **230V**

OPERATING TEMPERATURE **-20°-+50°C**

CRI/Ra **≥75**

IP RATING **IP66**



## HIGH BAY

**Powerful LED High Bay luminaires are the best suited replacements for HQI, HID or induction based luminaires.**

- Robust design
- Forged aluminum body 1070
- 3x more efficient cooling than castings
- One-piece cooler
- Thermal conductivity coefficient 226W/mk
- Nichia SMD LED chips
- Low glare index
- Long life up to 50,000h (L70)
- Various beam angles

The highest quality components ensure optimum heat dissipation and economical operation with a life of 50,000h.

# HIGH BAY

PROFESSIONAL LUMINAIRES  
FOR DEMANDING CONDITIONS



ONLINE INFO



**TESLA**  
LIGHTING

ENERGY  
EFFICIENCY  
CLASS

**A**



	CATALOGUE NUMBER	EAN	POWER CONSUMPTION	LUMINOUS FLUX	COLOR TEMPERATURE	BEAM ANGLE	LIFESPAN	DIMMABLE	DIMENSIONS	WEIGHT
<b>A</b>	IL261050-6CHED	8596238002067	<b>100W</b>	16 000lm	5000K	60°/70°/90°/110°	50 000h	<b>YES 1-10V</b>	Ø260x140mm	2,18kg
<b>A</b>	IL261550-6CHED	8596238002074	<b>150W</b>	24 000lm	5000K	60°/70°/90°/110°	50 000h	<b>YES 1-10V</b>	Ø260x140mm	2,18kg
<b>A</b>	IL282050-6CHED	8596238002081	<b>200W</b>	32 000lm	5000K	60°/70°/90°/110°	50 000h	<b>YES 1-10V</b>	Ø280x150mm	3,2kg
<b>B</b>	IL251050-4CHED	8596238001183	<b>100W</b>	14 000lm	5000K	60°/70°/90°/110°	50 000h	<b>YES 1-10V</b>	Ø252x180mm	3,9kg
<b>B</b>	IL251550-4CHED	8596238001169	<b>150W</b>	21 000lm	5000K	60°/70°/90°/110°	50 000h	<b>YES 1-10V</b>	Ø252x200mm	4,2kg
<b>B</b>	IL282050-4CHED	8596238001176	<b>200W</b>	27 000lm	5000K	60°/70°/90°/110°	50 000h	<b>YES 1-10V</b>	Ø280x228mm	6,8kg
<b>B</b>	IL282450-4CHED	8596238001190	<b>240W</b>	32 000lm	5000K	60°/70°/90°/110°	50 000h	<b>YES 1-10V</b>	Ø280x228mm	6,8kg

C O R P

VOLTAGE **90-305V AC**

OPERATING TEMPERATURE **-30°- +45°C**

CRI/Ra **≥80**

IP RATING **IP65**





## EXPLOSION-PROOF LED LIGHT

**LED explosion-proof Light is specially designed to replace conventional lighting in a wide variety of hazardous area applications, both indoor and outdoor.**

- *Body and flange made from AISi*
- *Power coated cover RAL 1005*
- *Optical cover made of tempered glass*
- *Ready for continuous installation*
- *Dimmable EVG DIMM up to 50%*
- *Equipped with self-resetting thermal fuse and overvoltage protection up to 4kV*

Its high luminous flux, instant illumination, light weight design and versatile mounting options make it ideal solution for chemical industry, oilfields, power stations etc.



# EXPLOSION-PROOF LED LIGHT

## FOR HAZARDOUS AREA APPLICATIONS



ONLINE INFO



ENERGY  
EFFICIENCY  
CLASS

**A+**



**A**



**B**

	CATALOGUE NUMBER	POWER CONSUMPTION	LUMINOUS FLUX	BEAM ANGLE	COLOR TEMPERATURE	LIFESPAN	WEIGHT	DIMENSIONS
<b>A</b>	EX203040-ID	<b>30W</b>	3 880lm	120°	4000K	35 000h	6kg	200x260mm
<b>B</b>	EX403563-1	<b>35W</b>	3 550lm	120°	6300K	35 000h	5kg	408x155x208mm
<b>B</b>	EX402563-1	<b>25W</b>	2 600lm	120°	6300K	35 000h	5kg	408x155x208mm

C O R P

VOLTAGE **230V** OPERATING TEMPERATURE **-40°-+50°C** CRI/Ra **≥80** IP RATING **IP66**



## **PUBLIC LIGHTING PANORAMA**

**The TESLA Panorama public lighting comes with a simple, modern design.**

- *Kvalitní a robustní provedení*
- *LED čipy COB*
- *LED driver Meanwell*
- *Optimální odvod tepla*
- *Provozní napětí AC230V/50Hz*
- *Účinnost > 0,95; IP65*
- *Těleso svítidla tlakově odlito z hliníku*
- *Antikorozi povrchová úprava*

# PANORAMA PUBLIC LIGHTING

ECONOMIC AND EFFICIENT LIGHTING



ONLINE INFO



**TESLA**  
LIGHTING

ENERGY  
EFFICIENCY  
CLASS

**A+**



CATALOGUE NUMBER	EAN	POWER CONSUMPTION	LUMINOUS FLUX	COLOR TEMPERATURE	PROTECTION CLASS	LIFESPAN	DIMENSIONS	WEIGHT	SUPPORT ARM DIAMETER
SL403040-6HE	8596238001046	<b>30W</b>	3 600lm	4000K	IP65	50 000h	400x170x60mm	1,6kg	53mm
SL506040-6HE	8596238001053	<b>60W</b>	7 200lm	4000K	IP65	50 000h	500x215x80mm	2,1kg	53mm
SL628040-6HE	8596238001084	<b>80W</b>	9 600lm	4000K	IP65	50 000h	620x260x85mm	3,2kg	64mm
SL721040-6HE	8596238001114	<b>100W</b>	12 000lm	4000K	IP65	50 000h	720x280x95mm	4,25kg	64mm
SL533040-6HE	8596238001060	<b>30W</b>	3 600lm	4000K	IP65	50 000h	530x250x100mm	2,6kg	61mm
SL536040-6HE	8596238001077	<b>60W</b>	7 200lm	4000K	IP65	50 000h	530x250x100mm	2,9kg	61mm
SL658040-6HE	8596238001107	<b>80W</b>	9 600lm	4000K	IP65	50 000h	650x250x120mm	3,6kg	61mm
SL651040-6HE	8596238001091	<b>100W</b>	12 000lm	4000K	IP65	50 000h	650x250x120mm	3,7kg	61mm

C O R P

VOLTAGE **230V**

FREQUENCY **50Hz**

OPERATING TEMPERATURE **-25°- +40°C**

CRI/Ra **≥70**

IP RATING **IP65**



## **WALKER PUBLIC LIGHTING**

**The TESLA WALKER public lighting series comes with a simple and modern design.**

- *Quality and robust design*
- *SMD LED chips*
- *Sosen / Tridonic LED driver*
- *Optimum heat dissipation*
- *Operating voltage AC230V / 50Hz*
- *Power factor > 0.9; CRI > 70; IP66*
- *Total harmonic distortion < 15%*
- *Installation tube diameter 60mm*
- *Environmentally friendly - no mercury or other hazardous substances*

- *Optional*
  - *Light color 3000 - 5000K*
  - *Non-dimmable or dimmable source*
  - *Luminaire body made of aluminum*



# WALKER PUBLIC LIGHTING

ECONOMIC AND EFFICIENT LIGHTING



ONLINE INFO



**TESLA**  
LIGHTING

ENERGY  
EFFICIENCY  
CLASS

**A+**



CATALOGUE NUMBER	EAN	POWER CONSUMPTION	LUMINOUS FLUX	COLOR TEMPERATURE	PROTECTION CLASS	LIFESPAN	DIMENSIONS	WEIGHT	SUPPORT ARM DIAMETER
SL503040-7	8596238002104	<b>30W</b>	3 900lm	4000K	IP66	50 000h	497x272x128mm	5,5kg	60mm
SL505040-7	8596238002111	<b>50W</b>	6 500lm	4000K	IP66	50 000h	497x272x128mm	5,5kg	60mm
SL507040-7	8596238002128	<b>70W</b>	9 100lm	4000K	IP66	50 000h	497x272x128mm	5,5kg	60mm
SL629040-7	8596238002135	<b>90W</b>	11 700lm	4000K	IP66	50 000h	621x336x129mm	7,9kg	60mm
SL621240-7	8596238002142	<b>120W</b>	15 600lm	4000K	IP66	50 000h	621x336x129mm	7,9kg	60mm
SL621540-7	8596238002159	<b>150W</b>	18 750lm	4000K	IP66	50 000h	621x336x129mm	7,9kg	60mm

C O R P

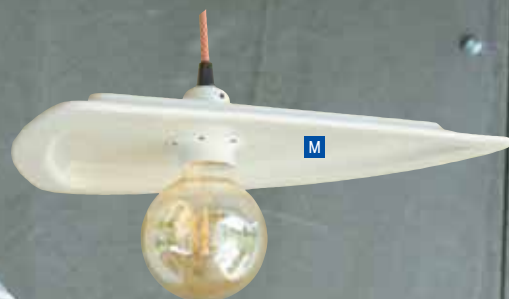
VOLTAGE **230V**

FREQUENCY **50Hz**

OPERATING TEMPERATURE **-30°-+50°C**

CRI/Ra **≥70**

IP RATING **IP66** PF **0,9**



## PORCELAIN LIGHTS

**In cooperation with G. Benedikt  
a unique range of luminaires was  
created from Carlsbad porcelain.**

*The company G. Benedikt based in Karlovy Vary is one of the best known porcelain manufacturers. Founded 1882 by the Benedict brothers. G. Benedikt porcelain excels with extraordinary mechanical resilience and offers timeless and proven series like Prague, Princip, Melodia and Kent.*

These models fit into homes, hotels, restaurants and office buildings. You get the highest possible quality material because of the choice of Carlsbad porcelain in these pendant luminaires.

# PORCELAIN LIGHTS

DESIGN LUMINAIRES MADE  
OF PORCELAIN FROM CARLSBAD



ONLINE INFO



**TESLA**  
LIGHTING



	CATALOGUE NUMBER	PRODUCT NAME	EAN	SOCKET	CABLE LENGTH	COLOR	MORE COLORS AVAILABLE	WEIGHT	DIMENSIONS
<b>A</b>	HL133030	<b>TUBIK</b>	8596238001398	E27	1m	white	NO	1,500kg	Ø110x160mm
<b>B</b>	HL140150	<b>RENDLÍK</b>	8596238001299	E27	1m	white	NO	1,300kg	Ø145x130mm
<b>C</b>	HL152031	<b>TEA PARTY</b>	8596238001367	E27	1m	black/white	<b>YES</b>	2,300kg	150x155x155mm
<b>D</b>	HL170250	<b>CAPPUCINO</b>	8596238001312	E27	1m	white	NO	1,700kg	Ø170x140mm
<b>E</b>	HL212015	<b>GATSBY</b>	8596238001329	E27	1m	white	NO	2,200kg	Ø210x160mm
<b>F</b>	HL222030	<b>PYRAMIDA I</b>	8596238001350	E27	1m	black/white	<b>YES</b>	3,900kg	230x230x150mm
<b>G</b>	HL222050	<b>PYRAMIDA II</b>	8596238001374	E27	1m	black/white	<b>YES</b>	4,100kg	220x220x18mm
<b>H</b>	HL262005	<b>RUSTIKA</b>	8596238001336	E27	1m	white	NO	2,300kg	Ø265x180mm
<b>I</b>	HL270033	<b>VINYL</b>	8596238001343	E27	1m	black/white	<b>YES</b>	2,300kg	Ø275x120mm
<b>J</b>	HL270270	<b>UFO</b>	8596238001305	E27	1m	white	NO	2,800kg	Ø270x135mm
<b>K</b>	HL293037	<b>KLOBOUK ALŽBĚTA</b>	8596238001404	E27	1m	white	NO	3,100kg	Ø290x160mm
<b>L</b>	HL322039	<b>PYRAMIDA III</b>	8596238001381	E27	1m	black/white	<b>YES</b>	7,500kg	325x325x165mm
<b>M</b>	HL37TACC	<b>DISKUS</b>	8596238001411	E27	1m	white	NO	4,420kg	270x350x90mm

C O R P

VOLTAGE **230V**

FREQUENCY **50Hz**

OPERATING TEMPERATURE **-20°- +40°C**

IP RATING **IP20**

# TESLA BATTERIES

## TYPE AA



A



A-F



G-J



K-M



N

CATALOGUE NUMBER	PRODUCT NAME	EAN	TYPE	VOLTAGE	MATERIAL	PCS IN PACKAGE	RE-CHARGABLE	CAPACITY
A	1099137101 Tesla - AA BLUE+ Zinc carbon baterie, R06, FOIL /10ks	8594183391151	R06	1.5V	ZnC	10	no	-
B	1099137121 Tesla - AA BLUE+ Zinc carbon baterie, R06, FOIL /24 ks	8594183391168	R06	1.5V	ZnC	24	no	-
C	1099137183 Tesla - AA BLUE+ Zinc carbon baterie, R06, FOIL/4 ks	8594183392028	R06	1.5V	ZnC	4	no	-
D	1099137006 Tesla - BLUE+ Zinc Carbon baterie AA (R06, tužková, blister) 4 ks	8594183391052	R06	1.5V	ZnC	4	no	-
E	1099137185 Tesla - BLUE+ Zinc Carbon baterie AA (R06, tužková, blister) 6 ks	8594183392042	R06	1.5V	ZnC	6	no	-
F	1099137068 Tesla - BLUE+ Zinc Carbon baterie AA (R06, tužková, paper) 4 ks	8594183391694	R06	1.5V	ZnC	4	no	-
G	1099137005 Tesla - SILVER+ Alkaline baterie AA (LR06, tužková, blister) 4 ks	8594183391038	LR06	1.5V	Alkaline	4	no	-
H	1099137187 Tesla - SILVER+ Alkaline baterie AA (LR06, tužková, blister) 6 ks	8594183392066	LR06	1.5V	Alkaline	6	no	-
I	1099137067 Tesla - SILVER+ Alkaline baterie AA (LR06, tužková, paper) 4 ks	8594183391687	LR06	1.5V	Alkaline	4	no	-
J	1099137102 Tesla - AA SILVER+ Alkaline baterie, LR06, FOIL/10ks	8594183391182	LR06	1.5V	Alkaline	10	no	-
K	1099137123 Tesla - GOLD+ Alkaline baterie AA (LR06, tužková, blister) 2 ks	8594183391199	LR06	1.5V	Alkaline	2	no	-
L	1099137004 Tesla - GOLD+ Alkaline baterie AA (LR06, tužková, blister) 4 ks	8594183391014	LR06	1.5V	Alkaline	4	no	-
M	1099137066 Tesla - GOLD+ Alkaline baterie AA (LR06, tužková, paper) 4 ks	8594183391670	LR06	1.5V	Alkaline	4	no	-
N	1099137124 Tesla - NiMH 2450 mAh nabíjecí baterie AA (HR06, tužková, blister) 4 ks	8594183391205	HR06	1.2V	NiMH	4	yes	2450 mAh



# TESLA BATTERIES

## TYPE AAA



ONLINE INFO



**TESLA**  
LIGHTING



A



A-F



G  
K-M



H-J

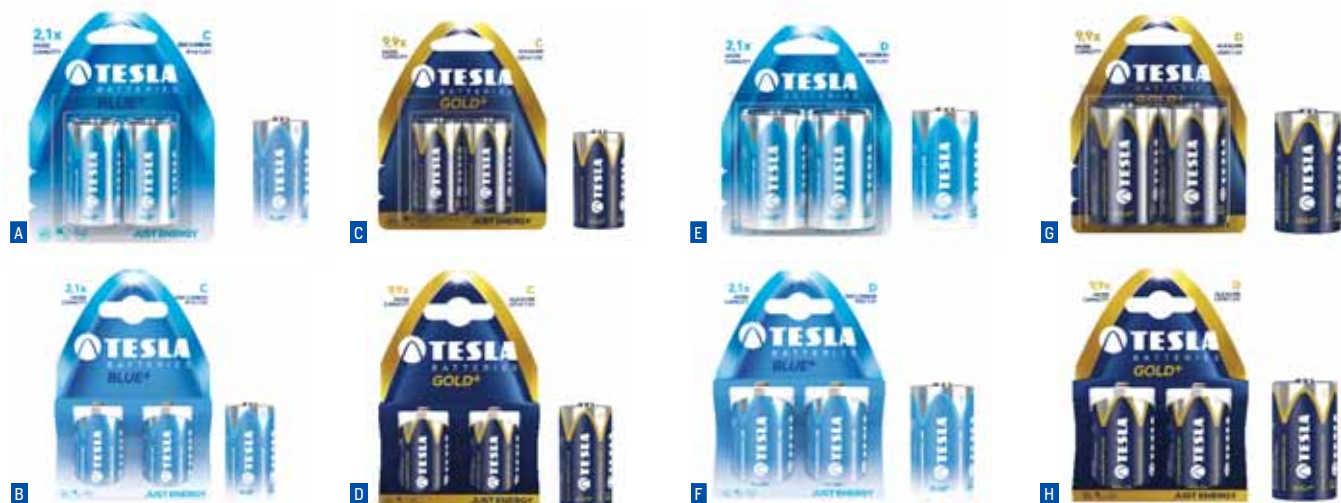


N

CATALOGUE NUMBER	PRODUCT NAME	EAN	TYPE	VOLTAGE	MATERIAL	PCS IN PACKAGE	RE-CHARGABLE	CAPACITY
A	1099137099 Tesla - AAA BLUE+ Zinc carbon baterie, R03, FOIL/10 ks	8594183391083	R03	1.5V	ZnC	10	no	-
B	1099137116 Tesla - AAA BLUE+ Zinc carbon baterie, R03, FOIL/24 ks	8594183391090	R03	1.5V	ZnC	24	no	-
C	1099137184 Tesla - AAA BLUE+ Zinc carbon baterie, R03, FOIL/4 ks	8594183392035	R03	1.5V	ZnC	4	no	-
D	1099137003 Tesla - BLUE+ Zinc Carbon baterie AAA (R03, mikrotužková, blister) 4 ks	8594183391069	R03	1.5V	ZnC	4	no	-
E	1099137186 Tesla - BLUE+ Zinc Carbon baterie AAA (R03, mikrotužková, blister) 6 ks	8594183392059	R03	1.5V	ZnC	6	no	-
F	1099137071 Tesla - BLUE+ Zinc Carbon baterie AAA (R03, mikrotužková, paper) 4 ks	8594183391731	R03	1.5V	ZnC	4	no	-
G	1099137100 Tesla - AAA SILVER+ Alkaline baterie, LR03, FOIL/10ks	8594183391113	LR03	1.5V	Alkaline	10	no	-
H	1099137118 Tesla - GOLD+ Alkaline baterie AAA (LR03, mikrotužková, blister) 2 ks	8594183391120	LR03	1.5V	Alkaline	2	no	-
I	1099137001 Tesla - GOLD+ Alkaline baterie AAA (LR03, mikrotužková, blister) 4 ks	8594183391021	LR03	1.5V	Alkaline	4	no	-
J	1099137069 Tesla - GOLD+ Alkaline baterie AAA (LR03, mikrotužková, paper) 4 ks	8594183391717	LR03	1.5V	Alkaline	4	no	-
K	1099137002 Tesla - SILVER+ Alkaline baterie AAA (LR03, mikrotužková, blister) 4 ks	8594183391045	LR03	1.5V	Alkaline	4	no	-
L	1099137188 Tesla - SILVER+ Alkaline baterie AAA (LR03, mikrotužková, blister) 6 ks	8594183392073	LR03	1.5V	Alkaline	6	no	-
M	1099137070 Tesla - SILVER+ Alkaline baterie AAA (LR03, mikrotužková, paper) 4 ks	8594183391724	LR03	1.5V	Alkaline	4	no	-
N	1099137119 Tesla - NiMH 800 mAh nab. baterie AAA (HR03, mikrotuž., blister) 4 ks	8594183391137	HR03	1.2V	NiMH	4	yes	800 mAh

# TESLA BATTERIES

## MONOCELLS



CATALOGUE NUMBER	PRODUCT NAME	EAN	TYPE	VOLTAGE	MATERIAL	PCS IN PACKAGE	RE-CHARGABLE	CAPACITY
A	Tesla - BLUE+ Zinc Carbon baterie C (R14, malý monočlánek, blister) 2 ks	8594183391229	R14	1,5V	ZnC	2	no	-
B	Tesla - BLUE+ Zinc Carbon baterie C (R14, malý monočlánek, paper) 2 ks	8594183391755	R14	1,5V	ZnC	2	no	-
C	Tesla - GOLD+ Alkaline baterie C (LR14, malý monočlánek, blister) 2 ks	8594183391236	LR14	1,5V	Alkaline	2	no	-
D	Tesla - GOLD+ Alkaline baterie C (LR14, malý monočlánek, paper) 2 ks	8594183391762	LR14	1,5V	Alkaline	2	no	-
E	Tesla - BLUE+ Zinc Carbon baterie D (R20, velký monočlánek, blister) 2 ks	8594183391243	R20	1,5V	ZnC	2	no	-
F	Tesla - BLUE+ Zinc Carbon baterie D (R20, velký monočlánek, paper) 2 ks	8594183391779	R20	1,5V	ZnC	2	no	-
G	Tesla - GOLD+ Alkaline baterie D (LR20, velký monočlánek, blister) 2 ks	8594183391250	LR20	1,5V	Alkaline	2	no	-
H	Tesla - GOLD+ Alkaline baterie D (LR20, velký monočlánek, paper) 2 ks	8594183391786	LR20	1,5V	Alkaline	2	no	-

# TESLA BATTERIES

## BUTTON CELLS



A



B



C



D

	CATALOGUE NUMBER	PRODUCT NAME	EAN	TYPE	VOLTAGE	MATERIAL	PCS IN PACKAGE	RE-CHARGABLE	CAPACITY
<b>A</b>	1099137152	Tesla - CR 1220 Lithium baterie 3V, BLISTER/4ks	8594183391557	CR1220	3V	Lithium	4	no	-
	1099137155	Tesla - CR 1616 Lithium baterie 3V, BLISTER/4ks	8594183391601	CR1616	3V	Lithium	4	no	-
	1099137156	Tesla - CR 1620 Lithium baterie 3V, BLISTER/4ks	8594183391618	CR1620	3V	Lithium	4	no	-
	1099137157	Tesla - CR 1632 Lithium baterie 3V, BLISTER/4ks	8594183391625	CR1632	3V	Lithium	4	no	-
	1099137154	Tesla - CR 2016 Lithium baterie 3V, BLISTER/4ks	8594183391571	CR2016	3V	Lithium	4	no	-
	1099137110	Tesla - CR 2025 Lithium baterie 3V, BLISTER/4ks	8594183391588	CR2025	3V	Lithium	4	no	-
	1099137111	Tesla - CR 2032 Lithium baterie 3V, BLISTER/4ks	8594183391595	CR2032	3V	Lithium	4	no	-
	1099137108	Tesla - CR 2430 Lithium baterie 3V, BLISTER/4ks	8594183391526	CR2430	3V	Lithium	4	no	-
	1099137109	Tesla - CR 2450 Lithium baterie 3V, BLISTER/4ks	8594183391533	CR2450	3V	Lithium	4	no	-
<b>B</b>	1099137141	Tesla - LR 1154 Alkaline baterie (LR44), BLISTER/5 ks	8594183391427	LR1154	1,5V	Alkaline	5	no	-
<b>C</b>	1099137144	Tesla - SR 1121 Silver baterie, SR55, BLISTER/5ks	8594183391458	SR1121	1,55V	SilverOxid	5	no	-
	1099137145	Tesla - SR 1131 Silver baterie, SR54, BLISTER/5ks	8594183391465	SR1131	1,55V	SilverOxid	5	no	-
	1099137150	Tesla - SR 1154 Silver baterie, SR44, BLISTER/5ks	8594183391519	SR1154	1,55V	SilverOxid	5	no	-
	1099137189	Tesla - SR 621 SW Silver Oxide, BLISTER / 5 KS	8594183392080	SR621	1,55V	SilverOxid	5	no	-
	1099137190	Tesla - SR 626 SW Silver Oxide, BLISTER / 5 KS	8594183392097	SR626	1,55V	SilverOxid	5	no	-
	1099137143	Tesla - SR 736 Silver baterie, SR41, BLISTER/5ks	8594183391441	SR736	1,55V	SilverOxid	5	no	-
	1099137148	Tesla - SR 926 Silver baterie, SR57, BLISTER/5ks	8594183391496	SR926	1,55V	SilverOxid	5	no	-
<b>D</b>	1099137146	Tesla - SR 936 Silver baterie, SR45, BLISTER/5ks	8594183391472	SR936	1,55V	SilverOxid	5	no	-

# TESLA BATTERIES

## FOR HEARING AIDS



A



B



C



D

CATALOGUE NUMBER	PRODUCT NAME	EAN	TYPE	VOLTAGE	MATERIAL	PCS IN PACKAGE	RE-CHARGABLE	CAPACITY
A 1099137158	Tesla - baterie do naslouchadel PR10 Zinc Air (PR70/paper/6 ks)	8594183391632	PR10	1,45V	ZincAir	6	no	90 mAh
B 1099137159	Tesla - baterie do naslouchadel PR13 Zinc Air (PR48/paper/6 ks)	8594183391649	PR13	1,45V	ZincAir	6	no	90 mAh
C 1099137160	Tesla - baterie do naslouchadel PR312 Zinc Air (PR41/paper/6 ks)	8594183391656	PR312	1,45V	ZincAir	6	no	160 mAh
D 1099137161	Tesla - baterie do naslouchadel PR675 Zinc Air (PR44/paper/6 ks)	8594183391663	PR675	1,45V	ZincAir	6	no	630 mAh



# TESLA BATTERIES

## VARIOUS TYPES



ONLINE INFO



**TESLA**  
LIGHTING



A

B

C

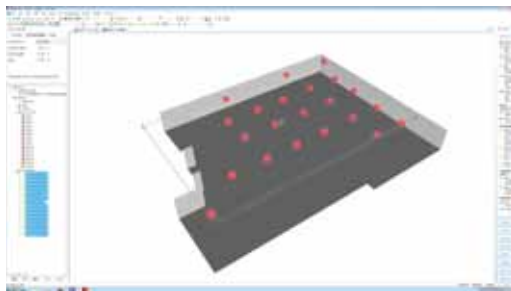
D

CATALOGUE NUMBER	PRODUCT NAME	EAN	TYPE	VOLTAGE	MATERIAL	PCS IN PACKAGE	RE-CHARGABLE	CAPACITY
1099137097	Tesla - 4,5V BLUE+ Zinc carbon baterie, 3R12, FOIL/1ks	8594183391267	3R12	4,5V	ZnC	1	no	-
<b>A</b> 1099137103	Tesla - 4,5V BLUE+ Zinc carbon baterie, 3R12, BLISTER/1ks	8594183391830	3R12	4,5V	ZnC	1	no	-
<b>B</b> 1099137098	Tesla - 9V BLUE+ Zinc Carbon baterie (6F22, BLISTER) 1ks	8594183391847	6F22	9V	ZnC	1	no	-
1099137114	Tesla - 9V BLUE+ Zinc Carbon baterie (6F22, FOIL) 1ks	8594183391274	6F22	9V	ZnC	1	no	-
1099137028	Tesla - 9V GOLD+ Alkaline baterie 9V (6LR61, blister) 1 ks	8594183391281	6LR1	9V	Alkaline	1	no	-
<b>C</b> 1099137130	Tesla - nabíjecí baterie 9V (HR9V, 9V, BLISTER) 1 ks	8594183391298	HR9V	9V	NiMH	1	yes	200mAh
1099137174	Tesla - 9V BLUE+ Zinc Carbon baterie (6F22, paper) 1 ks	8594183391809	6F22	9V	ZnC	1	no	-
1099137107	Tesla - CR 123 Lithium baterie 3V, (CR 17345), BLISTER 1 ks	8594183391335	CR123	3V	Lithium	1	no	-
<b>D</b> 1099137133	Tesla - CR 2 Lithium baterie 3V (CR2/BLISTER/1KS)	8594183391342	CR2	3V	Lithium	1	no	-
1099137131	Tesla - LR 23A ( 8LR932 / BLISTER FOIL ) 1ks	8594183391311	LR23A	12V	Alkaline	1	no	-
1099137132	Tesla - LR 27A ( 8LR732 / BLISTER FOIL ) 1ks	8594183391328	LR27A	12V	Alkaline	1	no	-
1099137113	Tesla - LR1 ALKALICKÁ BATERIE (LR1/BLISTR) 1ks	8594183391304	LR1	1,5V	Alkaline	1	no	-



**Dialux is professional software for calculating interior and exterior lighting. Our designers use it to design new lighting projects as well as lighting reconstruction, where we replace conventional fluorescent, halogen or other lights with our LED lights.**

The program's most important outputs include working illumination levels that serve as a basis for approval per hygienic standards, as well as 3D visualizations including a dimensional lighting drawing for installation.



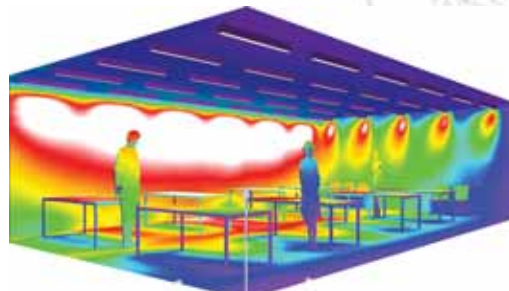
# DIALux

made by DIAL.

**The TESLA Lighting professional product line offers plugins for Dialux software.**

### Lighting design phases in Dialux software

1. Interior lighting analysis
2. Measurement of the client's space for modeling purposes
3. Spatial modeling
4. Populating the 3D space with TESLA Lighting lights
5. Export of a report with lighting calculations



# TESLA LED PHOTOMETRIC LABORATORY

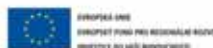


**TESLA Lighting is offering services of photometric laboratory, which has been opened in March 2015.**



Laboratory is equipped with integration sphere used for precise measurement of light spectrum and lumen output. Second basic device is Goniometer used for measuring light curves of luminaire or light source.

Measurement output are Test reports which based on measuring device includes all necessary parameters about tested light source such as: Chromaticity Coordinates, Dominant wavelength, Rendering Index, Flux, Efficiency, Voltage, Power Factor and photometric dates used for light software 3D simulation.



# TESLA LIGHTING REFERENCES



ONLINE INFO



**TESLA**  
LIGHTING



**Lighting at the Palace Hotel in Prague**  
Client: Art Nouveau Palace Hotel Prague

ART  
NOUVEAU  
**PALACE**  
HOTEL · PRAGUE



# TESLA LIGHTING REFERENCES





**TESLA**  
L I G H T I N G

## SAVINGS THANKS TO LED TECHNOLOGY



LED TECHNOLOGY  
IS CURRENTLY THE  
MOST EFFICIENT  
SOURCE OF LIGHT

When replacing original conventional light sources for LED lighting you save up to 90% on electric energy. At the same time you save on maintenance costs because the new LED lamps have a significantly longer lifespan. According to the model it can reach up to 50,000 hours which is more than 5 years of continuous lighting.



savings  
up to  
**90%**

long  
life

ecology

TESLA LIGHTING  
MLADOBOLESLAVSKÁ 1108 190 00 PRAGUE 9 - VYSOČANY CZECH REPUBLIK  
telefon +420 251 109 400 fax +420 251 109 877 info@tesla-lighting.cz  
www.tesla-lighting.cz